



# A1000

The automated picking system for rapid amortization.

- + very fast storage
- + most effective storage management
- + high storage capacity
- + sophisticated and robust technology
- + long life expectancy



## Why does the A1000 amortize itself faster than other automated picking systems?

*"Due to the quick input technology, daily deliveries can be stored in very short time and I can return to my customer much faster. No more searching, no more out-of-stocks or unnecessary courier services. Work is fun again."*

### Innovative shutter and drawer storage

You have the choice: You can choose to have either shutter or drawer storage to go with your A1000 system. In both cases, you have chosen the extremely fast and effective input technology.

The items are scanned and placed on the shelves in the shutter, that's it. This process is always continuous and uninterrupted. Only a quick and continuous storage process can really save time.



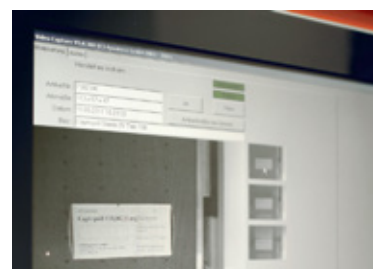
### Timesaving entry of new article data

In times when discount agreements are continuously changing, entering new items into the system is part of your daily business. The A1000 is particularly good in helping you do this task. Just place the package on the scanner and confirm. The A1000 measures the package automatically and updates the master data immediately.



### Error-free thanks to VidCap

Look forward to having an error-free storage. Incorrect storage does not occur due to sophisticated plausibility checks. The A1000 compares the dimensions of every package with the master data stored. Differences will appear immediately as a picture on your screen. You can then either accept the item for storage or have it take out again. In both cases, you have everything under control.



Extremely fast input technology



Effective stock management



### Simple management of expiry data

Do you want to make sure that your stock does not contain packages that have already expired? No problem. With the expiry data management system of the A1000, the oldest packages will always be dispensed first. For quick stock checks, all stored products can be listed according to their expiry date and dispensed at the back-office chute.

### Fully automatic retrieval of returns

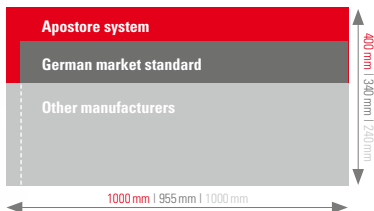
With Apostore, you can retrieve returns in an uncomplicated and comfortable way. Just by pressing a button, the A1000 will also make sure products that have been in stock in your pharmacy for weeks – and will probably not be sold that much in the future – are retrieved and prepared for returning.

# APOSTORE

Leading Technology For Your Success

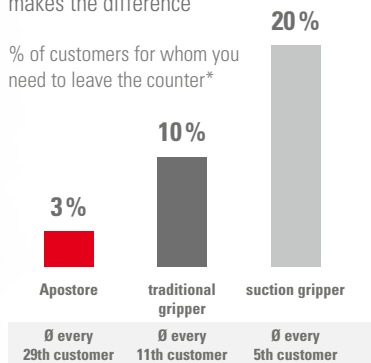
Compact dimensions

comparison of shelf depth



The degree of automation makes the difference

% of customers for whom you need to leave the counter\*



High savings potential



## Enormous storage capacity

Apostore's enormous storage performance per m<sup>2</sup> makes it a real space saver. When stored in a row, more packages fit in the 40cm deep shelves than you would ever think. We will gladly analyze the package range of your pharmacy.

## Highest degree of automation

One stock – one process. More items can be stored in an Apostore automated system than in conventional systems. It's gripper technology, which has been proven since 2000, handles packages that are heavier and larger than those other automated system can handle. Apostore handles them all – no matter if they are blistered, bundled, rectangular or round!

The system recognizes orders from the counter at once and the gripper will interrupt the storing in process and dispense your customer's orders immediately. The operator at the shutter or drawer will not notice a thing and can continue to store items in the system.

\*at an average prescription percentage of 80% and 1.7 packages/prescription

## Flexible VarioShelving

The size of the packages and even complete product ranges can change during the 20-year life cycle of your automated picking system. Apostore's VarioShelving system offers you lifetime adjustment opportunities that adapt to the changing sizes of packages. The removable glass shelf boards can be hung elsewhere if later so required thus enabling you to make use of the largest storage capacity your system has to offer.

## System housing with shelves

The A1000 makes use of all chances to save space – even on the outside of the robot: it is prepared for a shelving system. You can make the best use of the space available in your back office and do not require extra shelving or simply use Apostore shelves to display your products behind the counter.

## Power-saving greenline technology

With the greenline technology\* all components under current can be switched to standby mode automatically when not in use. And you are able to reduce power consumption to less than 70 watts/hour and be gentle to the electrical components. The system will resume full operation within seconds when a customer enters the pharmacy.

\*Utility Model No. 202010016724.8

*“ The reason why the A1000 has paid for itself so quickly is very simple. I am now able to store wholesale supplies very quickly and efficiently and my staff saves a lot of time in the back office. The system has a high degree of automation and an extremely high storage density. Despite the fact that I have a small stock, my capacity to deliver has increased, and due to the expiry date control and simple retrieval of returns I have a better control of my stock.”*



Experience and Innovation



The development of the automated picking system is, to a large extent, also the history of Apostore.

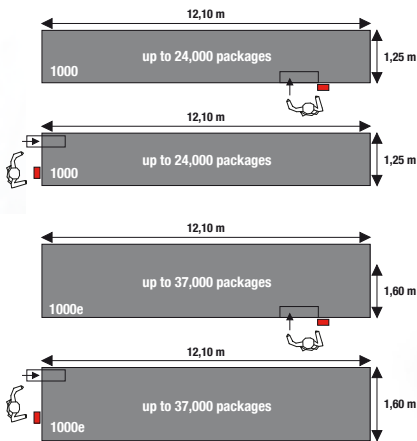
Already in 1986, Apostore developed the first picking robot. Apostore is not only the most experienced manufacturer but was also always able to set new market standards. The new generation of automated systems is even more efficient and fail-safe. They require even less space to store medicines and, thanks to the greenline technology, consume the least amount of power. See the difference!

Contact us. We will be happy to help you.



The Vienna University of Economic Sciences examined for several months the innovation behaviour of some hundred middle-sized enterprises in Germany. The 100 best, among them Apostore, received a quality seal from its mentor, Dr. Lothar Späth.

Features	A1000	A1000e
+ width	1.27 m	1.60 m
+ max. height	2.00 m–3.60 m	2.00 m–3.60 m
+ max. length	3.10 m–12.10 m	3.10 m–12.10 m
+ length grid	50 cm	50 cm
+ shelf depth	2 x 24 cm	2 x 40 cm
+ input	front/side	front/side
+ max. packages	up to 24,000	up to 37,000
+ max. m <sup>2</sup> storage space	276	459
+ max. package sizes	195 x 140 x 120	R 240 x 140 x 120 S 195 x 140 x 120
+ max. package sizes XL shutter	–	R 340 x 240 x 180
+ max. package weight (single package)	1.200 g	1.200 g
+ number of robots	1	1
+ dispensing time	8–12 sec.	8–12 sec.
+ system housing	■	■
+ decor variations	12– 500	12–500
+ drywall housing	□	□
+ expiry date management	■	■
+ removal of returns according to expiry date	■	■
+ VidCap	■	■
+ VarioShelving	■	■
+ Apoclean	□	□
+ Multipick	■	■
+ Kombipick	■	■
+ Handling big packages	■	■
+ fan-free flash PC	■	■
+ location printer	■	■
+ 400 Volt technology	■	■
+ greenline technology	■	■



### Colour collection

Let your creativity run free and choose your favourite design from over 500 different colours and decors.

#### Standard



#### Special colours



[www.apostore.de](http://www.apostore.de)

Apostore GmbH

Uferstraße 10  
45881 Gelsenkirchen  
Germany

Phone 0209 - 94 117 - 0  
Fax 0209 - 94 117 - 17